

International expert services in civil engineering, environment and sustainable urban development

LCPC

Experts



ACCES TO A UNIQUE
NETWORK OF
INTERNATIONAL
EXPERTS, RESEARCHERS
AND ENGINEERS FOR
ALL ASPECTS OF
CIVIL ENGINEERING



Synergising scientific research and civil engineering

Ifsttar, Egis, and PRES University Paris-Est, have formed a partnership to create **LCPC Experts**, a joint subsidiary providing international technical expertise to stakeholders in territory development and construction.

LCPC Experts uses its unique combination of scientific research knowledge and engineering experience to deliver high-level expert services in the areas of civil engineering (roads and bridges, structures, materials, geotechnics), natural hazards, environment and sustainable urban development.



European leader in research for transport and civil engineering, IFSTTAR is the result of a merger between the LCPC Laboratory (Laboratoire Central des Ponts et Chaussées - French Public Works Laboratory) and INRETS.



The Paris Est University hub of research and high education (PRES) is a key player in its area with a potential of 3,500 researchers (scientists, academics and engineers).



Egis is a leading French consulting and engineering group working worldwide in the fields of transport, local and territorial development, construction, industry, water, energy and environment.

International expert services in civil engineering, environment and sustainable urban development

LCPC Experts offers multidisciplinary expert services that combine the cutting edge of new technologies with scientific knowledge in civil engineering.



1

- 4 Geotechnics and natural hazards
- 5 Materials, concrete, steel
- 6 On-site testing and measurements



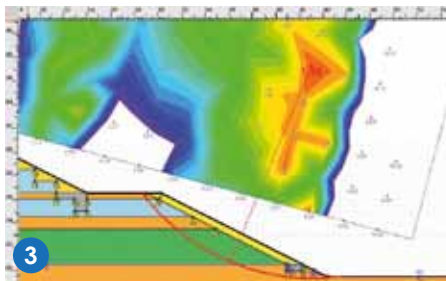
4



2



5



3

- 1 Road construction and pavements
- 2 Bridges and structures
- 3 Design calculations



6

Via its partners **LCPC Experts** offers expert services underpinned by calculation tools, testing services and laboratories.

Some examples of expert services

- **Assistance** to a public client for comparative analysis of technical standards and normative procedures
- **Diagnosis** of materials employed on construction site: concrete, steel, treated soil, pavement materials and bituminous coatings
- **Expertise** on design calculation for civil engineering structures
- **Overseeing of formulation** of materials and behaviour prediction
- **Expert examination, assistance, advice** on asset management system: roads, bridges, structures...

YOU ARE :

- > PUBLIC OR PRIVATE OWNERS
- > PROJECT MANAGERS
- > CONTRACTORS
- > INSURANCE COMPANIES
- > EXPERTS

Meeting Client's requirements

- **ANDRA**
Expert advice on foundation concrete for radioactive waste storage cells
- **TRACTEBEL**
Expert advice on formulation of concrete structures for railway project
- **EUROPEAN COMMISSION**
Technical assistance for motor vehicles directives
- **SAUDI ARABIA NSR railway project**
Geotechnical advice on sand backfill stability



LCPC Experts
Head Office:
58, boulevard Lefebvre
75015 PARIS, France
Tél.: +33 (0) 140 435 196
Fax: +33(0) 140 436 597

Contact
François Depardon
Managing director
Tél. : +33 (0) 609 553 863
francois.depardon@lcpc-experts.fr